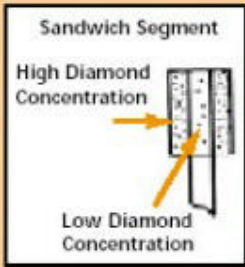


# WALL SAW & HAND SAW BLADES



Three Wall Saw Blade Innovations to Save You Money

Our Original Split Segment Design, *Ultimate Split Seg* and Sandwich Bonds deliver maximum wall and hand sawing results



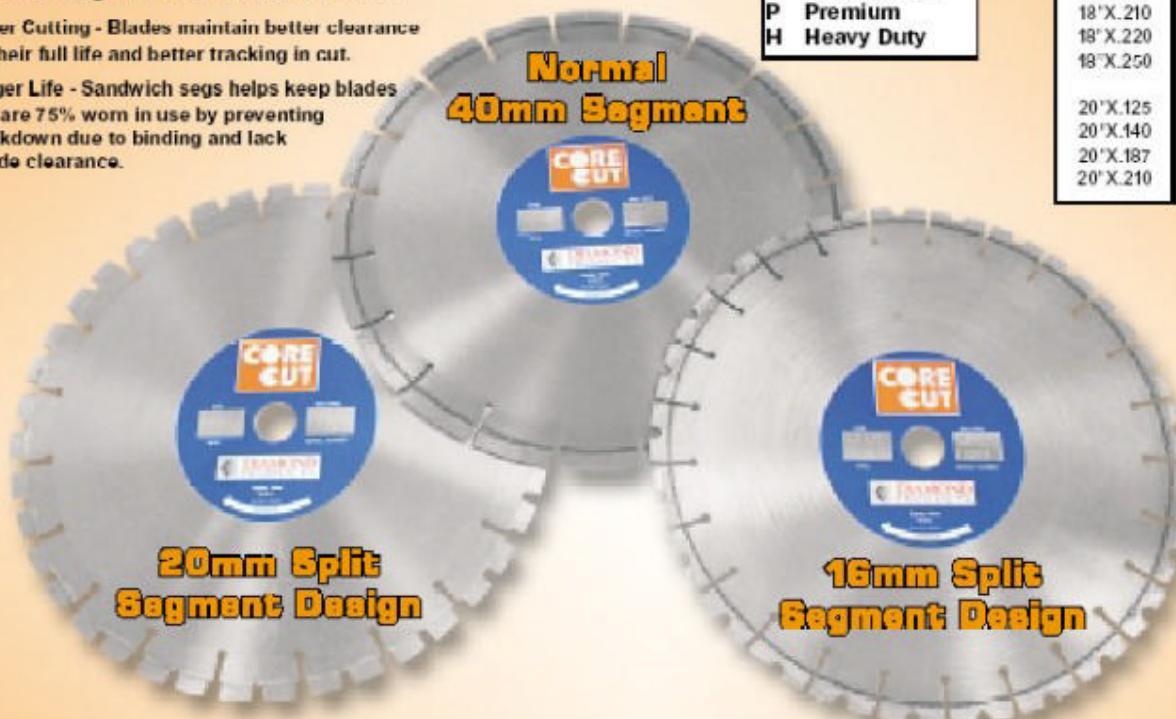
Diamond Depths				
Segment Type	H.D. Orange(H)	Premium Black(P)	Pro Blue(T)	Super Prem.(SP)
40mm regular	.236	.250	.320	.375
20mm	.312	.320	.375	.437
16mm	.312	.320	.375	.450

Available Sizes*		
12"X.110	24"X.140	36"X.187
12"X.125	24"X.187	36"X.210
	24"X.210	36"X.220
14"X.110	24"X.220	36"X.250
14"X.125	24"X.250	
14"X.140		42"X.187
	26"X.187	42"X.210
16"X.125	26"X.210	42"X.250
		48"X.210
18"X.125	30"X.175	48"X.250
18"X.187	30"X.187	
18"X.210	30"X.210	
18"X.220	30"X.220	54"X.210
18"X.250	30"X.250	54"X.250
		60"X.220
20"X.125	32"X.175	
20"X.140	32"X.187	
20"X.187	32"X.210	70"X.220
20"X.210	36"X.175	

Select Grade:  
SP Super Premium  
T Professional  
P Premium  
H Heavy Duty

Sandwich Seg Wall Saw Blades Offer...

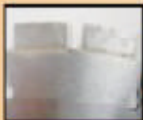
- ◆ **Faster Cutting** - Blades maintain better clearance for their full life and better tracking in cut.
- ◆ **Longer Life** - Sandwich segs helps keep blades that are 75% worn in use by preventing breakdown due to binding and lack of side clearance.



\* All Wall/Hand Saw blades come with 1" arbor standard.

Custom arbor sizes are available. When ordering, please specify arbor size if different from 1".

Additional blade sizes are available upon request.



-20 segment

- ◆ Split segments give less resistance for faster and more economical cutting.
- ◆ This design keeps segments cooler in higher steel applications. To order, add a (-20) to the end of your specifications.



-16 segment

- ◆ Split segments offer less resistance for faster and more economical cutting.
- ◆ This "horseshoe" shaped design helps prevent segment loss. To order, add a (-16) to the end of your specifications.



## ULTIMATE Wall Saw Blade

- ◆ -20 or -16 Split Sandwich Seg Designed with 'U' Gullet Design Core
- ◆ Cuts faster, removes slurry more efficiently
- ◆ Holds side clearances better

(Just order your normal -20 or -16 blades and add 'U' to the end of the specification)

Wall Saw/Hand Saw Blade Specifications		
TYPE OF SAWING	Sandwich	Non-Sandwich
Fast cutting hard aggregate air saws	W212	W20
General purpose air saws	W323	W2033
Fast cutting hydraulic saws and long life air saw	W3A3	W33
Fast cutting general purpose hydraulic saws	W434	W3342
General purpose hydraulic sawing	W535	W42
Long life general purpose blade for hydraulic saw	W545	W49
Long life soft aggregate brick & block hydraulic	W5A5	W50

When creating a specification for wall saw blades use this formula:

W(spec) (grade) 20 or -16 or M

Example: W535P-16

When ordering -20 blades, add MM to end of part number. Example: WP24187MM

When ordering -16 blades, add M16 to end of part number. Example: WP24187M16